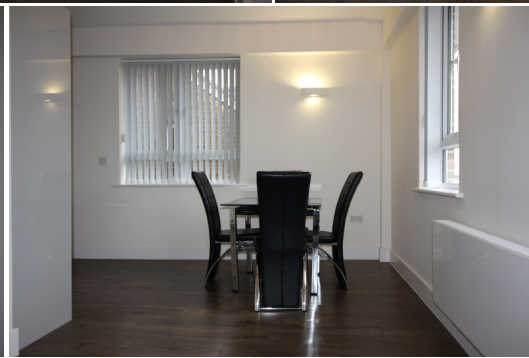




NextMove
LETTINGS

York Road
Maidenhead, SL6 1SF
£1,200 PCM





Features

- Superb apartment
- Town Centre
- Two double bedrooms
- Allocated parking
- Contemporary living
- Close to Station
- Luxury Kitchen
- Close to River Thames

Description

A superb two bedroom top floor apartment offering contemporary living and situated in the Town Centre just a few minutes walk from the station. The property is finished to a high standard. Accommodation comprises, entrance hall, living/dining area, luxury kitchen with integrated appliances, two double bedrooms, bathroom with over bath shower and cupboard housing washer/dryer. Additional benefits include wood laminate flooring, double glazing, gas central heating and video entry phone system. Outside there is allocated parking for one vehicle. The property is offered part furnished.

Further Details

- Available Immediately
- Council Tax band D
- EPC rating C
- No pets